

2: Xreal Beam

A collection of resources for Xreal Beam (a hardware solution to provide spacial/headtracking features)

- [What Does it Do?](#)
 - [Xreal Official Product Pages](#)
 - [Community Product Page](#)
- [Hardware Specs](#)
 - [Hardware Details](#)
 - [Photos](#)
- [Software/Native OS \(EVA\)](#)
 - [OS Releases/Versions](#)
- [Compatible Adapters/Peripherals](#)
 - [HDMI to USB-C Adapters](#)
 - [Charge and Play Adapters](#)
 - [Hubs & Docks](#)
 - [Heat Management/Cooling](#)
 - [Bluetooth Mouse & Keyboard/Controllers](#)
 - [External Storage](#)
 - [Lanyards/Belt Clips/Cases/Other](#)
- [Beginner's Setup Guide / Tips & Tricks](#)
 - [Standard Feature Overview](#)
 - [Adding New Apps](#)
 - [Depth Control Resizing](#)
- [Troubleshooting Manual](#)

- Wifi Issues
- Turning off / Resetting
- Fan / Cooling (Why is fan still running while beam is off)
- Bluetooth Issues
- Blank Screen (cannot see menu/UI)
- Power/Charging Issues (Beam not turning on)
- Advanced User Guide / Customization
 - Watching 3d Content (SBS Mode)
 - Android Settings Menu
 - Android Developer Settings Menu
 - Beam Developer Settings Menu (Chinese Menu)
 - Changing Screen Resolution
 - Setting Up Your Own UI / Replacing Native Beam Eva UI
 - Hardware Mods

What Does it Do?

What Does it Do?

Xreal Official Product Pages

Xreal Website: [XREAL Beam](#)

Xreal Reddit Reveal: [Everything you should know about XREAL Beam : r/Xreal \(reddit.com\)](#)

What Does it Do?

Community Product Page

Hardware Specs

Hardware Specs

Hardware Details

CPU: Rockchip RK3066 1.8GHz

Ram: 4GB DDR3

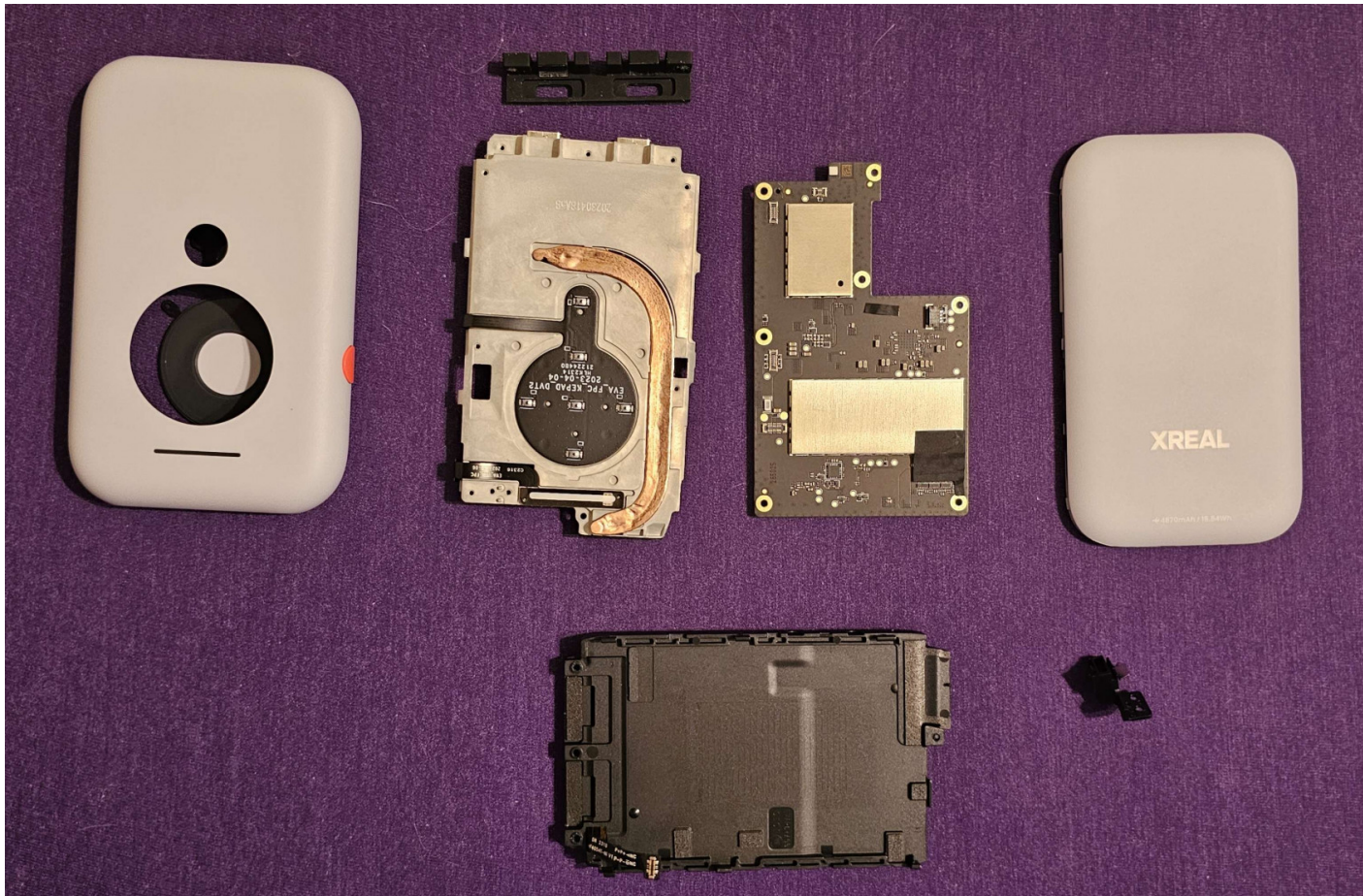
Storage: 34GB (22GB ~ usable)

GPU: GPU mali G52 Android 11

Battery: 4870 mha

I/O Ports: USB-C x 2 (one for input - charging or video input, one for output to glasses)

Photos





Software/Native OS (EVA)

Software/Native OS (EVA)

OS Releases/Versions

Compatible Adapters/Peripherals

Compatible Adapters/Peripherals

HDMI to USB-C Adapters

Charge and Play Adapters

Compatible Adapters/Peripherals

Hubs & Docks

Heat Management/Cooling

Bluetooth Mouse & Keyboard/Controllers

Compatible Adapters/Peripherals

External Storage

Compatible Adapters/Peripherals

Lanyards/Belt

Clips/Cases/Other

Beginner's Setup Guide / Tips & Tricks

Standard Feature Overview

Adding New Apps

Community App Store - <https://beam-apps.com/>

Adding Apps with Beam only (recommended)

Adding Apps with a PC

Adding Apps with a Phone

Other App Stores/Sources

Depth Control Resizing

Troubleshooting Manual

Wifi Issues

Turning off / Resetting

Fan / Cooling (Why is fan still running while beam is off)

Bluetooth Issues

Blank Screen (cannot see menu/UI)

Power/Charging Issues

(Beam not turning on)

Advanced User Guide / Customization

Watching 3d Content (SBS Mode)

Android Settings Menu

Android Developer Settings Menu

Beam Developer Settings Menu (Chinese Menu)

Changing Screen Resolution

Beam Native Apps

Mirrored Source

Setting Up Your Own UI / Replacing Native Beam Eva UI

Hardware Mods